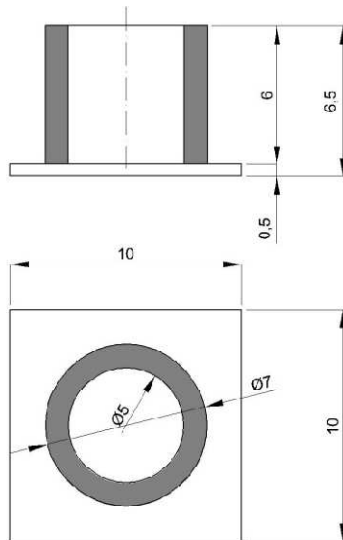


Dimensions (mm)



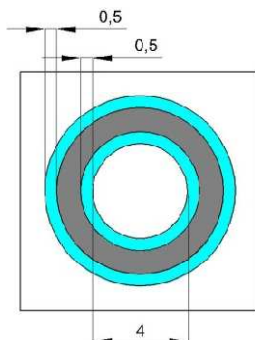
Materials

- Glass slide: borosilicate glass
thickness 0,5mm
- Reservoir: borosilicate glass
wallthickness 1,0mm
(mounted with biocompatible epoxy)
- Metallic film: sputter deposited gold
thickness 200nm
sputter deposited thin (10nm)
titan adhesion layer
- Insulation layer: PECVD deposited silicon nitride
thickness 1100nm

Layout

our layout will be used to pattern the metallic thin film and the insulation layer. You can download our layout file (file format dxf)

- use the layer “electrodes” to define the thin film metal pattern
- use the layer “contact openings” to define the openings through the insulation layer



Please study this initial design rules and contact with Aleria before drawing the layout!

- Smallest features size of metal and insulation layer 10µm
- There is a biocompatible, transparent epoxy below the reservoir (grey). During manufacturing the epoxy might flow out 0,5mm on each side of the reservoir. We therefore recommend a 0,5mm clearance of contact openings in this area.